

R-FACT Study

Risk Factors for Alloimmunization to Red Blood Cell Transfusion

A case control study

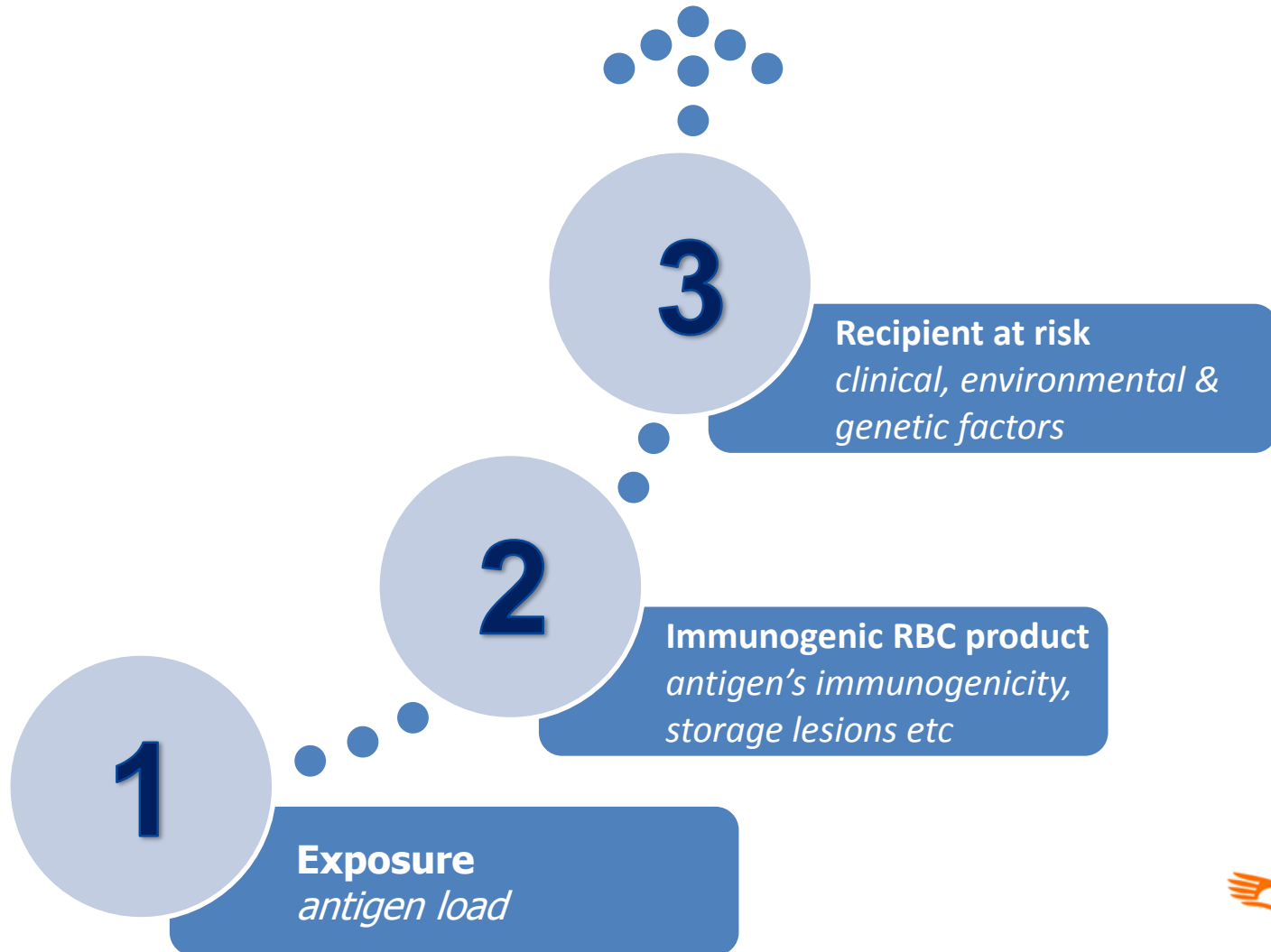
*Center for Clinical Transfusion Research
Sanquin Leiden.*

Research objective

Identifying (recipient and donor-related) factors associated with the risk of alloimmunization after RBC transfusion:

- insight into pathophysiological mechanisms of alloimmunization
- generate a risk score with cost effectiveness modeling
- extensive matching to those mostly profiting from this

Alloimmunization

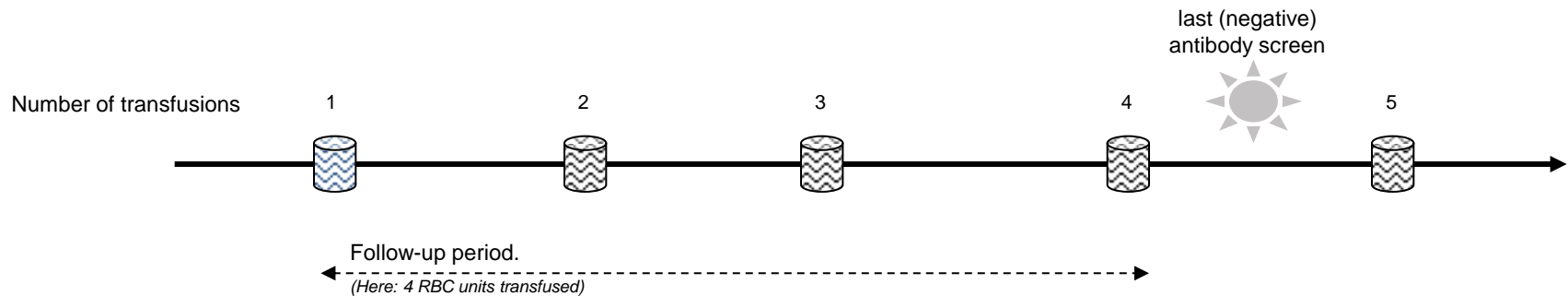


Methods

Incident new user cohort study: patients firstly transfused between 2005-2013

Follow-up until:

- non-immunized: last negative screen
- immunized: first-time alloantibody identification

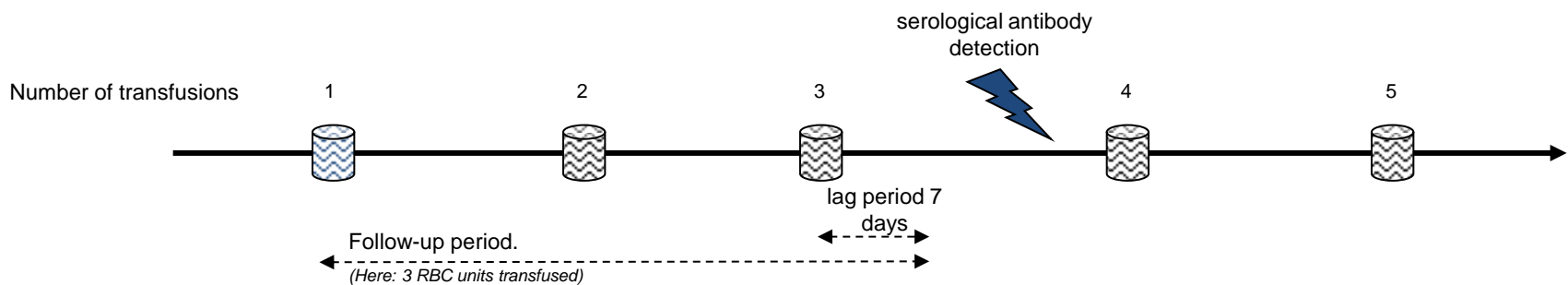


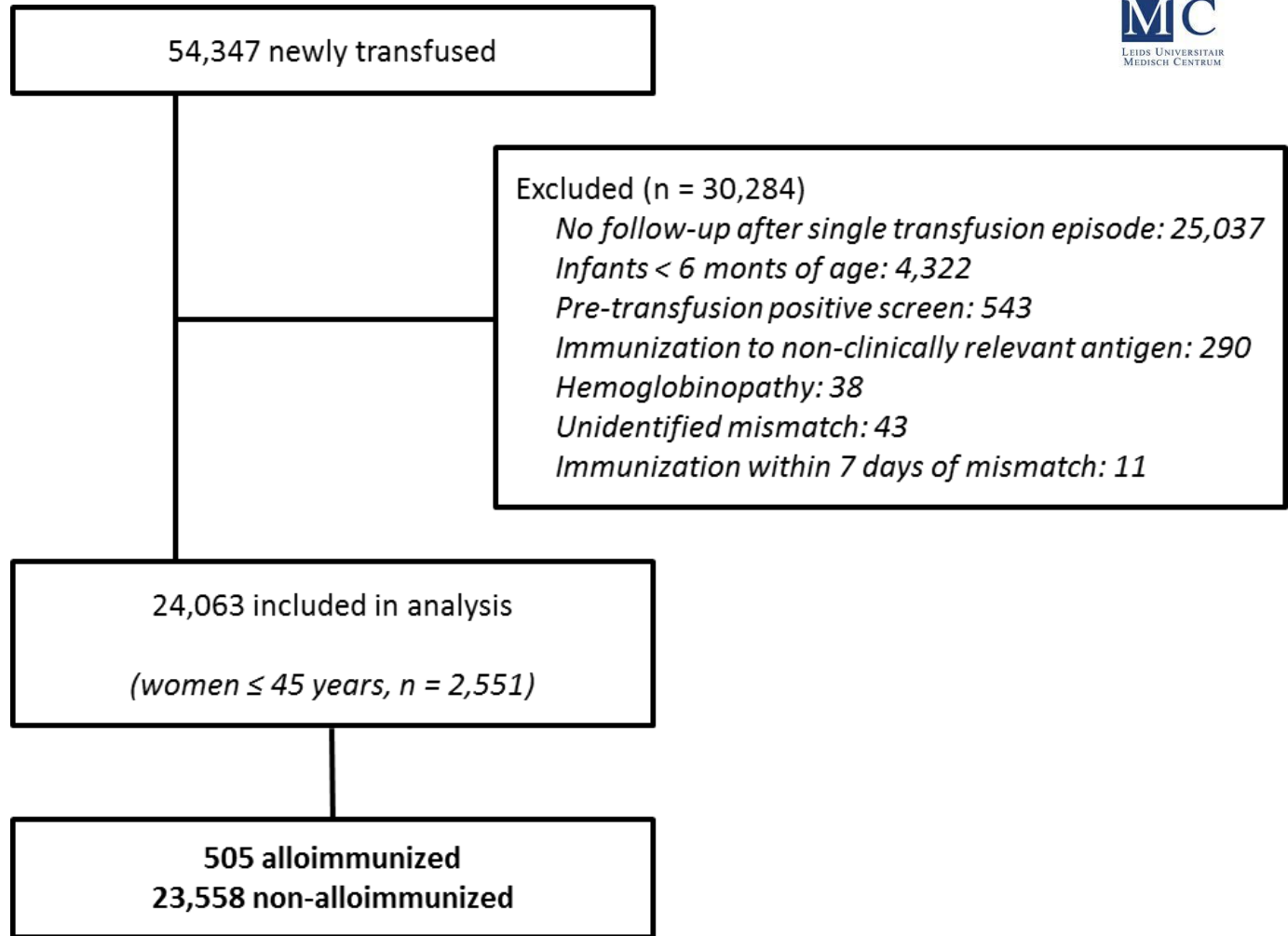
Methods

Incident new user cohort study: patients firstly transfused between 2005-2013

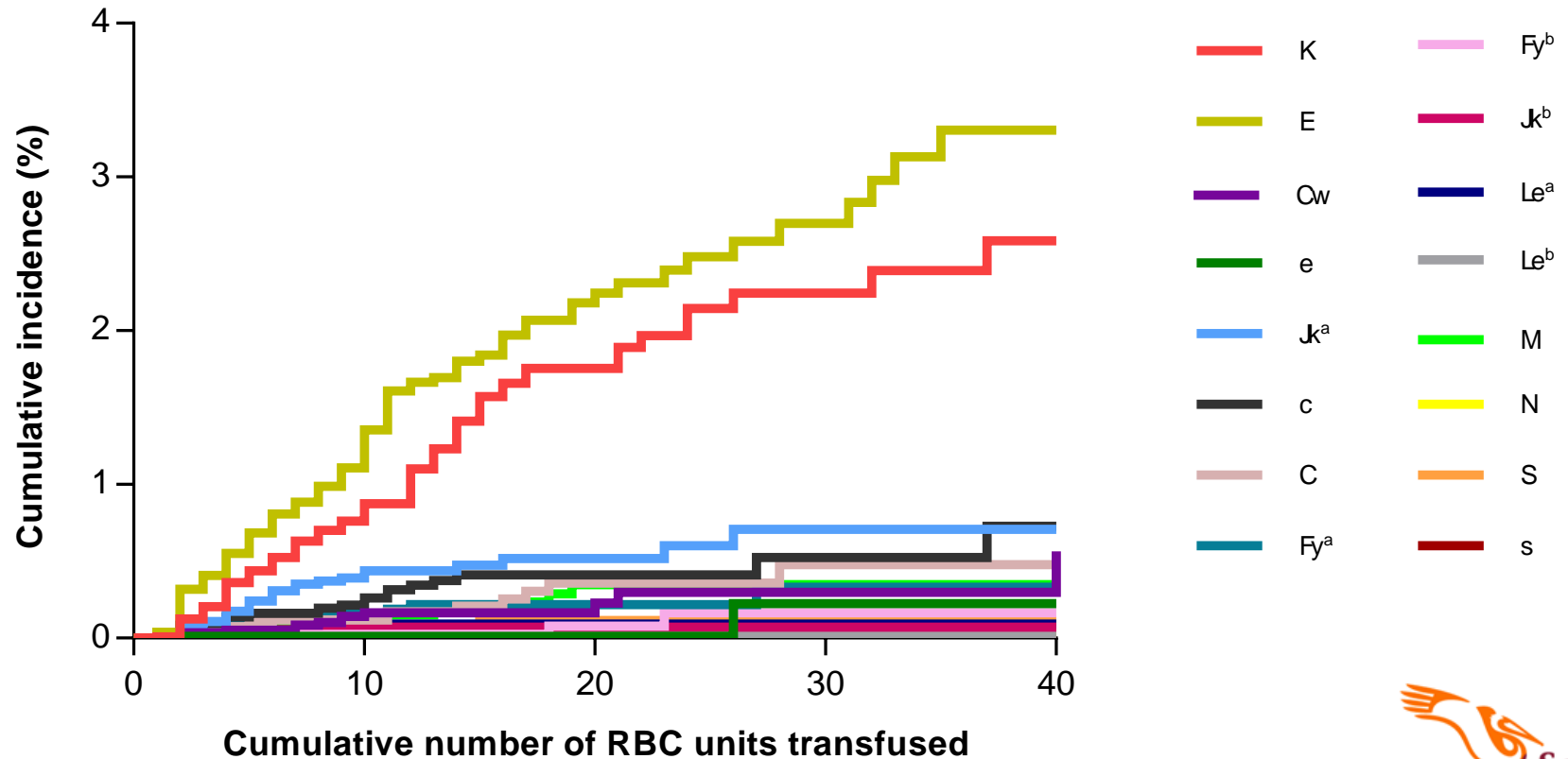
Follow-up until:

- non-immunized: last negative screen
- immunized: first-time alloantibody identification

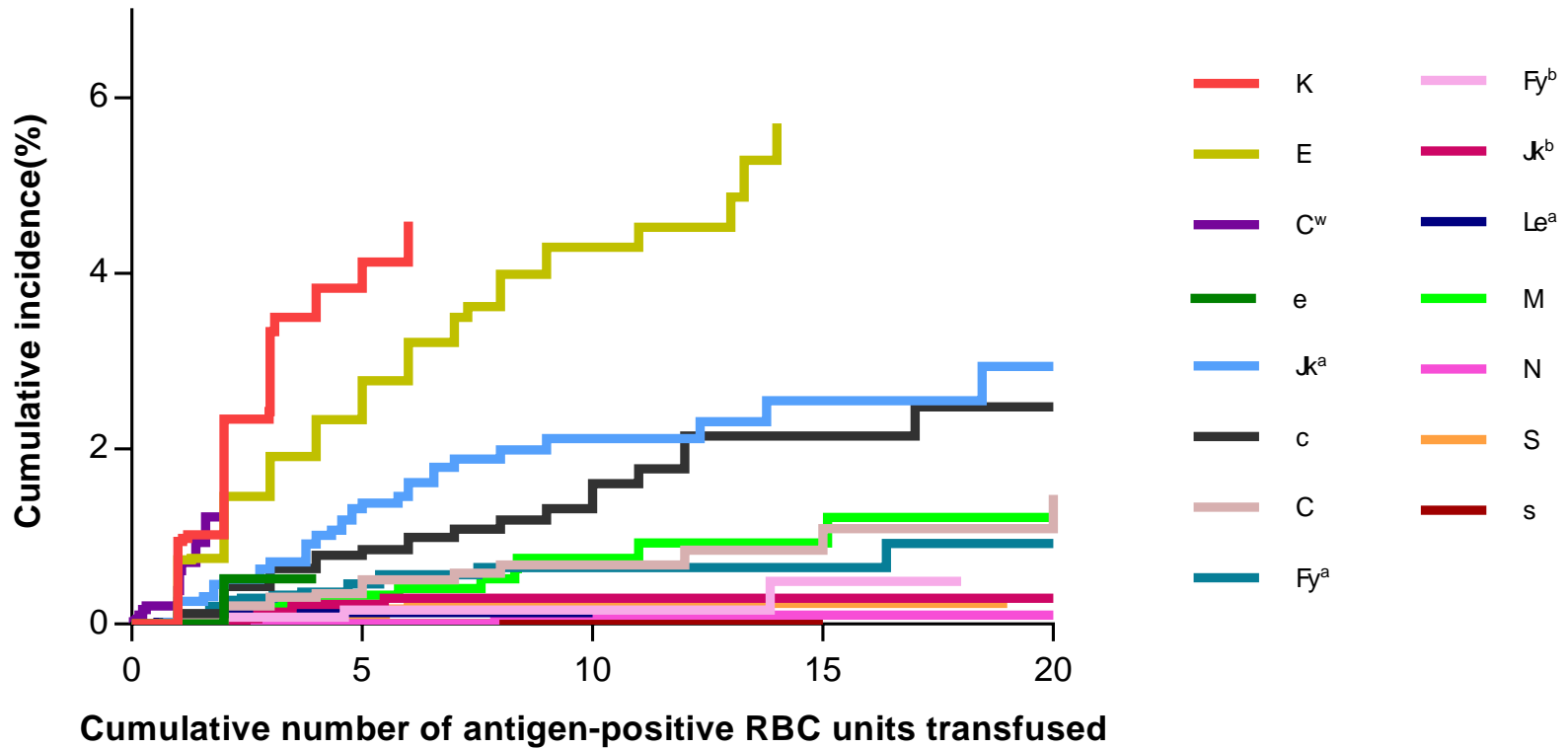




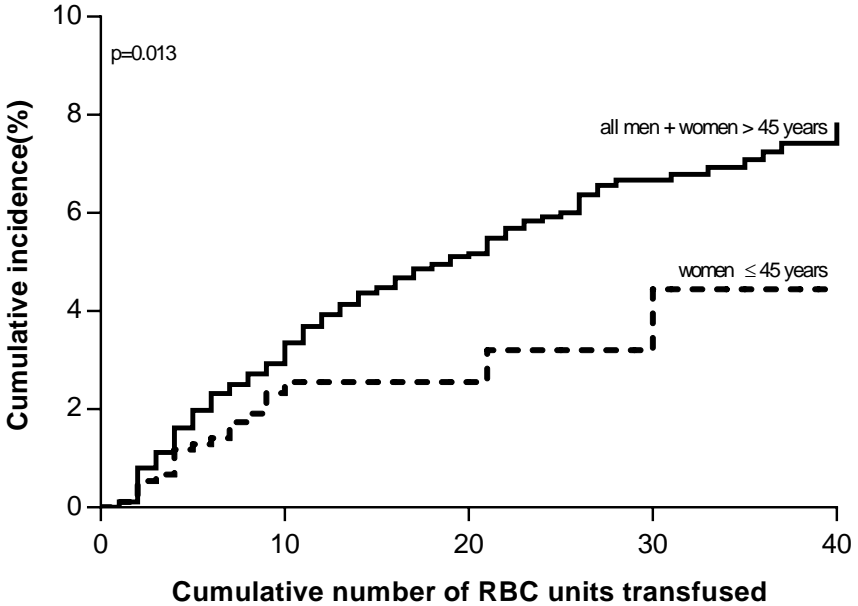
Exposure and antigen immunogenicity



Exposure and antigen immunogenicity



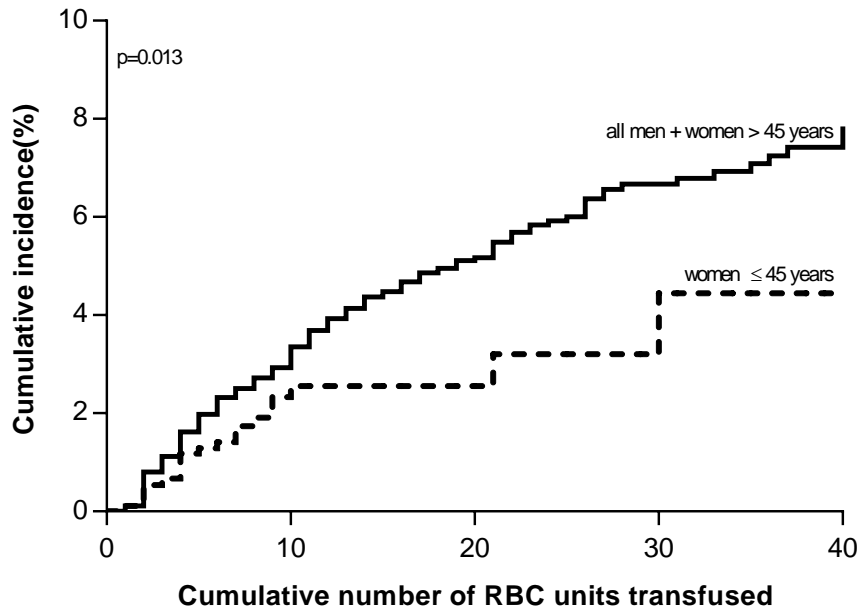
Matching is profitable



At risk, <i>n</i>					
—	21,512	4,309	1,521	725	399
- - -	2,551	405	153	72	38

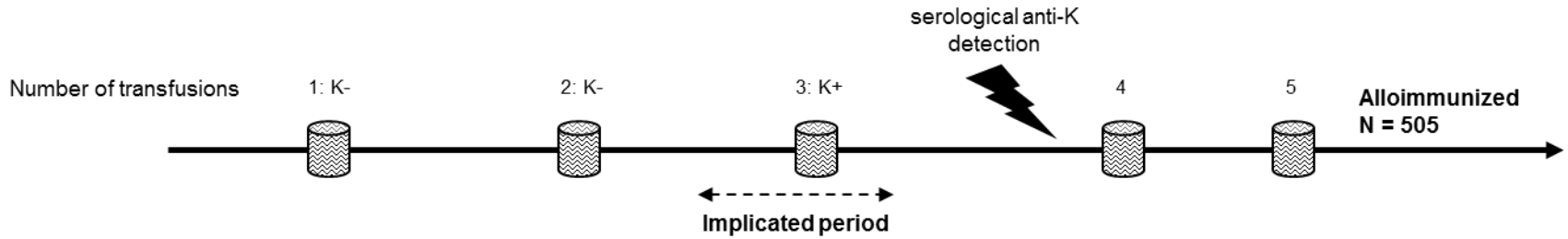
Matching is profitable

ALL	cE	cEK	CcEK	CcEK + Jk ^a	CcEK + Jk ^a + Fy ^a	CcEK + Jk ^a + Fy ^a + C ^w
100%	45%	69%	76%	83%	86%	88%



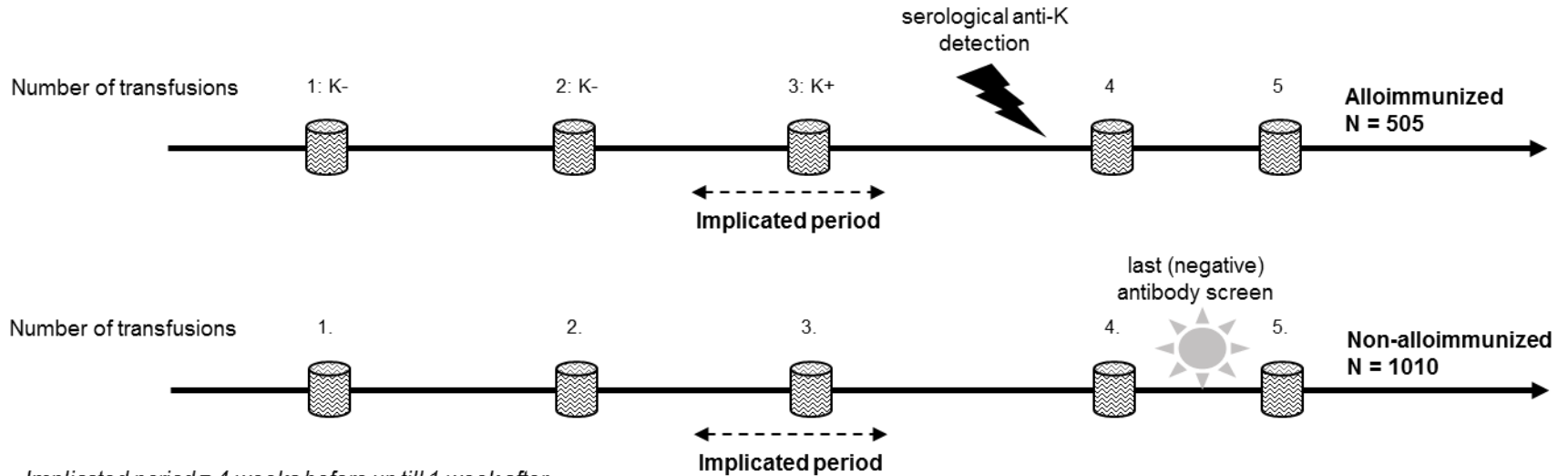
At risk, <i>n</i>						
—	21,512	4,309	1,521	725	399	
- - -	2,551	405	153	72	38	

Clinical Risk Factors



Implicated period = 4 weeks before up till 1 week after implicated transfusion.

Clinical Risk Factors



Implicated period = 4 weeks before up till 1 week after implicated transfusion.

Immunosuppressants

TABLE 3. RR of alloimmunization in patients using only corticosteroids, only other immunosuppressants, and both compared to using none of these*

Immunosuppressive therapy	Case patients	Control patients	Crude RR† (95% CI)	Adjusted RR‡ (95% CI)
None	93	150	1 (ref)	1 (ref)
Only corticosteroids	43	99	0.68 (0.43-1.08)	0.70 (0.42-1.16)
Only immunosuppressants	1	3	0.45 (0.04-5.00)	0.51 (0.04-7.1)
Both	10	51	0.28 (0.13-0.59)	0.19 (0.07-0.53)

† Adjusted for the matching variables (number of matched transfusions and hospital).

‡ Adjusted for matching variables (number of matched transfusions and hospital); sex, age, COPD, infection, fever, transplants, allergies, autoimmune diseases, leukemia, lymphoma, chemotherapy, surgeries, trauma, diabetes Type 1, and diabetes Type 2.

**Corticosteroids and/or immunosuppressants:
adjusted RR 0.55 (0.34-0.91)**

TABLE 1. Immunosuppressive medication use (n = 207 patients) among total study population of 468 patients

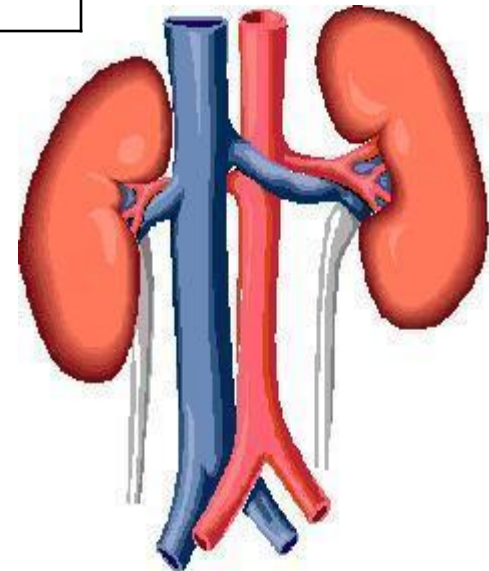
Medication	Number (%)
Prednisolone/prednisone	104 (50.2)
Dexamethasone	97 (46.9)
Hydrocortisone	50 (24.1)
Methylprednisolone	34 (16.4)
Other	1 (0.5)
Cyclosporine	34 (16.4)
Mycophenolate mofetil	37 (17.9)
Azathioprine	5 (2.4)
Antithymocyte globulin	9 (4.3)
Basiliximab	16 (7.7)
Tacrolimus	22 (10.6)
Thalidomide	3 (1.4)
Other	1 (0.5)

Preliminary results

Dialysis

	Crude OR	Crude OR 95%	Adjusted OR	Adjusted OR 95%
Dialysis	0.616	0.402-0.943	0.620	0.390-0.985
eGFR<30 ml/min gedurende ≥ 1 week	1.027	0.968-1.089	1.028	0.964-1.095
Kreat > 500 µmol/L (minimaal 1-malig)	0.630	0.425-0.933	0.621	0.406-0.949
Kreatinin > 500 µmol/L (≥ 1 measurement) without dialysis	0.929	0.422-2.044	0.872	0.386-1.971

Adjusted OR: adjusted for age, gender, DM2, cardiac morbidity, ICU admission, CABG, surgery, use of immunosuppressants.



Other potential associated factors

- Inflammation: fever, infection (and type e.g. bacterial vs viral), (coronary) atherosclerosis, COPD, leucopenia / -cytosis, CRP values
- Auto-immune diseases (and type)
- Malignancies: type, disseminated, treatment (chemo- / RTx, SCT)
- Surgery, ICU admission
-

Acknowledgement

LUMC Leiden en Sanquin Blood Supply

Jaap-Jan Zwaginga
Anske van der Bom
Dorothea Evers
Rutger Middelburg
Masja de Haas
Henk Schonewille
Karen van Brussel-de Groot

UMCU Utrecht

Karen de Vooght
Andre Ringeling

VUMC Amsterdam

Otto Visser
Nel Som
Mai Lie Tjoa

Catharina Ziekenhuis Eindhoven

Daan van de Kerkhoff
Ruud van Woensel
Leo van den Boogaard
Anton van der Stokker

Jeroen Bosch Ziekenhuis 's Hertogenbosch

Nathalie Pequeriaux
Ton Wolfhagen

HagaZiekenhuis Den Haag

Cisca Hudig
Gerard Smouter

